

Splitting or Cutting Blocks

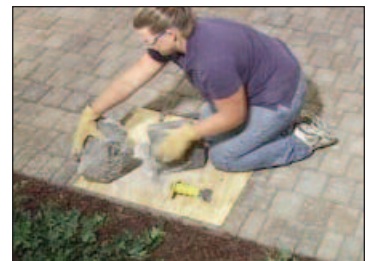
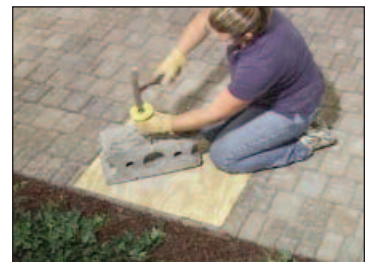
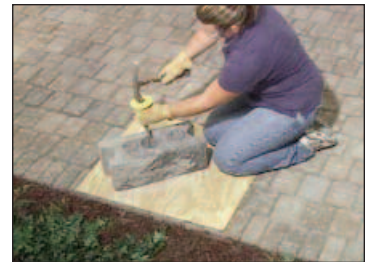


Splitting a block

To split a block from the AB Courtyard Collection, you can use a hammer and chisel or a skill saw.

Locate the blocks with the premarked splitting notches. Using a hammer and chisel, score around the blocks along the splitting notch, then break the blocks with a few sharp blows. This should yield a nice split.

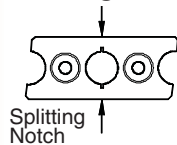
The split side creates a flush or straight edge when building panels with posts, corners or transitioning curves in the wall.



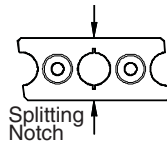
The AB Dublin and AB York blocks come with pre-marked splitting notches. Two out of three AB Dublin blocks comes with a center-split notch and one out of three come with an end-split notch. One out of Six AB York blocks have a center-split notch. See below.

SAFETY FIRST
 Always wear safety glasses when splitting or cutting block. A dust mask is recommended when cutting block.

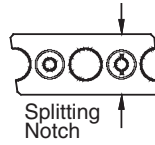
AB Dublin center-split with a right angle



AB Dublin center-split with a left angle



AB Dublin end-split with a left angle



AB York center-split

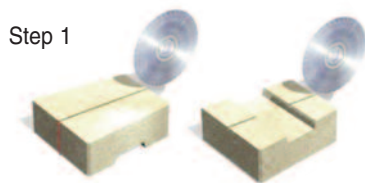


Splitting or Cutting Blocks

Splitting a Wall Cap block

Use the following 3 easy steps to split your Wall Cap.

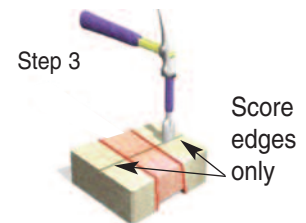
Step 1: Score the top and bottom of the block with a skill saw and masonry blade.



Step 2: Using a hammer and chisel, score the bottom of the block in notched area.



Step 3: Score the top with a chisel on the **outer edges only**. Strike harder blows in the scored area to split the block.



Do not score over the notch as the block will split the wrong way.

SAFETY FIRST

Always wear safety glasses when splitting or cutting block. A dust mask is recommended when cutting block.

The information shown here is for use with the Allan Block Courtyard products only.

Options for cutting a block with a saw

First determine where the block will need to be split.

- Use a skill saw with a masonry blade to score around the entire block and then with a hammer and chisel score around the block until it breaks. This should yield a nice split. *Shown at right.*
or
- Use a masonry saw with a dry cutting diamond blade. This method makes a complete cut and eliminates the need for a hammer and chisel.
or
- Use a metal chop saw with a dry cutting diamond blade to cut the block.

NOTE: Masonry saws and metal chop saws are available for rental at most retail centers.

